

Empresa avaliada: Criffer Instrumentos de Medição  
 Setor: Engenharia  
 Funcionário avaliado: Felipe da Criffer  
 Jornada de trabalho [hh:mm]: 08:00

Empresa avaliadora: Criffer  
 Realizado por: Matheus de Pauli  
 Data: 30/08/2019

**Configuração dos dosímetros**

Dosímetro NHO1 Curva de ponderação: A Ponderação de tempo: Lenta (S) Nível limiar (TL) [dB]: 80 Critério de referência (CR) [dB]: 85 Duplicação de dose (Q) [dB]: 3	Dosímetro NR15 Curva de ponderação: A Ponderação de tempo: Lenta (S) Nível limiar (TL) [dB]: 80 Critério de referência (CR) [dB]: 85 Duplicação de dose (Q) [dB]: 5	Dosímetro USER Curva de ponderação: A Ponderação de tempo: Lenta (S) Nível limiar (TL) [dB]: 80 Critério de referência (CR) [dB]: 85 Duplicação de dose (Q) [dB]: 3
--	--	--

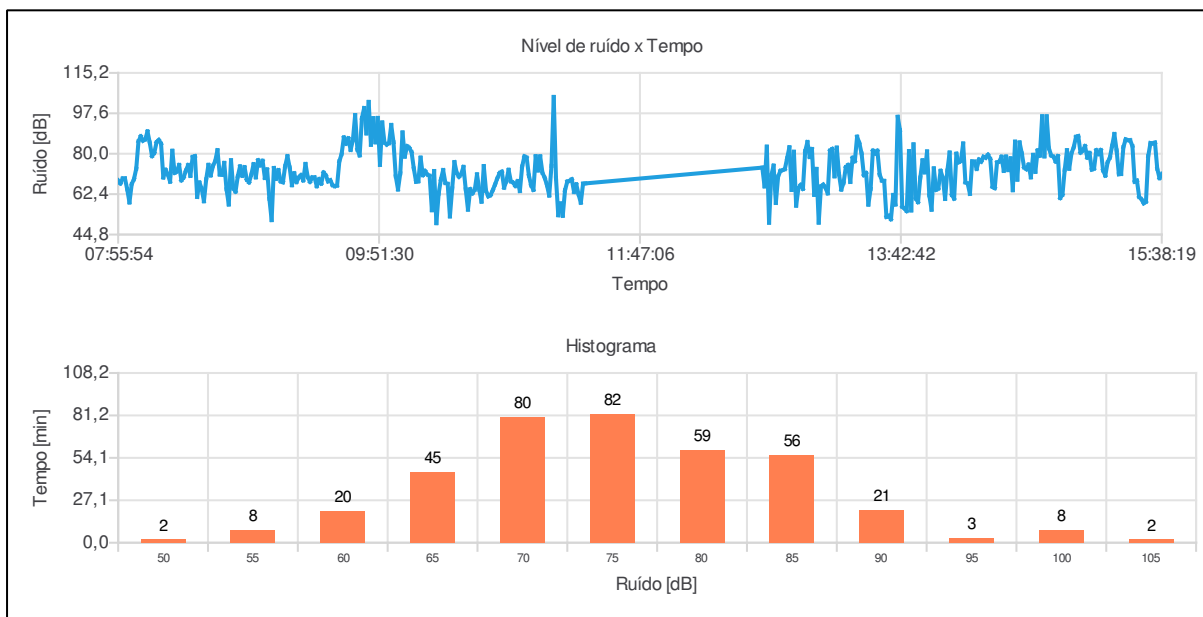
**Resultado da avaliação**

Duração: 06:26:32 Início: 07:55:54	Tempo em pausa: 01:17:37 Fim: 15:38:19
Dosímetro NHO1 Dose [%]: 83,58 Dose diária [%]: 103,79 Leq [dB]: 85,16 NE [dB]: 85,16 NEN [dB]: 85,16 TWA [dB]: 84,22 Ocorrências de picos de 115 dB: 1	Dosímetro NR15 Dose [%]: 22,23 Dose diária [%]: 27,61 Lavg [dB]: 75,72 NE [dB]: 75,72 NEN [dB]: 75,72 TWA [dB]: 74,15
	Dosímetro USER Dose [%]: 83,58 Dose diária [%]: 103,79 Leq [dB]: 85,16 NE [dB]: 85,16 NEN [dB]: 85,16 TWA [dB]: 84,22

**Registro de calibração**

Verificação de campo @ 1kHz Pré verificação [dB]: 114,00 (30/08/2019 07:54) Pós verificação [dB]: 113,91 (30/08/2019 15:39) Desvio [dB]: 0,09	Calibração de laboratório Dosímetro: 123 07/07/2019 Calibrador de áudio:
--	--

**Gráficos**



**Observações**

Lorem ipsum dolor sit amet, consectetur adipiscing elit, sed do eiusmod tempor incididunt ut labore et dolore magna aliqua. Ut enim ad minim veniam, quis nostrud exercitation ullamco laboris nisi ut aliquip ex ea commodo consequat. Duis aute irure dolor in reprehenderit in voluptate velit esse cillum dolore eu fugiat nulla pariatur. Excepteur sint occaecat cupidatat non proident, sunt in culpa qui officia deserunt mollit anim id est laborum.

Ind	D/H	L [dB]	Ind	D/H	L [dB]	Ind	D/H	L [dB]	Ind	D/H	L [dB]	Ind	D/H	L [dB]
001	07:55:54	68,39	056	08:50:54	70,42	111	09:45:54	88,87	166	10:40:54	62,01	221	12:53:19	82,79
002	07:56:54	67,08	057	08:51:54	74,12	112	09:46:54	102,55	167	10:41:54	64,13	222	12:54:19	64,23
003	07:57:54	69,20	058	08:52:54	68,71	113	09:47:54	83,92	168	10:42:54	66,61	223	12:55:19	80,84
004	07:58:54	69,25	059	08:53:54	67,55	114	09:48:54	95,46	169	10:43:54	69,29	224	12:56:19	57,41
005	07:59:54	64,57	060	08:54:54	70,92	115	09:49:54	84,99	170	10:44:54	71,52	225	12:57:19	65,01
006	08:00:54	58,81	061	08:55:54	75,43	116	09:50:54	95,57	171	10:45:54	72,17	226	12:58:19	66,39
007	08:01:54	66,74	062	08:56:54	69,73	117	09:51:54	75,18	172	10:46:54	65,24	227	12:59:19	64,71
008	08:02:54	68,95	063	08:57:54	77,14	118	09:52:54	93,59	173	10:47:54	68,03	228	13:00:19	81,12
009	08:03:54	73,44	064	08:58:54	74,99	119	09:53:54	84,85	174	10:48:54	72,98	229	13:01:19	85,09
010	08:04:54	85,38	065	08:59:54	76,90	120	09:54:54	84,01	175	10:49:54	67,97	230	13:02:19	78,58
011	08:05:54	87,56	066	09:00:54	69,46	121	09:55:54	84,58	176	10:50:54	67,40	231	13:03:19	82,05
012	08:06:54	85,69	067	09:01:54	73,14	122	09:56:54	92,51	177	10:51:54	66,00	232	13:04:19	62,11
013	08:07:54	86,28	068	09:02:54	60,41	123	09:57:54	85,00	178	10:52:54	68,02	233	13:05:19	73,38
014	08:08:54	89,69	069	09:03:54	51,11	124	09:58:54	70,20	179	10:53:54	63,77	234	13:06:19	50,02
015	08:09:54	84,79	070	09:04:54	73,77	125	09:59:54	64,46	180	10:54:54	74,39	235	13:07:19	65,77
016	08:10:54	78,99	071	09:05:54	69,09	126	10:00:54	71,50	181	10:55:54	78,84	236	13:08:19	66,54
017	08:11:54	80,36	072	09:06:54	72,85	127	10:01:54	89,24	182	10:56:54	78,29	237	13:09:19	65,13
018	08:12:54	84,96	073	09:07:54	67,98	128	10:02:54	78,76	183	10:57:54	70,45	238	13:10:19	62,76
019	08:13:54	85,97	074	09:08:54	67,58	129	10:03:54	83,28	184	10:58:54	66,21	239	13:11:19	81,36
020	08:14:54	84,34	075	09:09:54	74,60	130	10:04:54	82,52	185	10:59:54	64,26	240	13:12:19	82,07
021	08:15:54	69,67	076	09:10:54	78,92	131	10:05:54	80,72	186	11:00:54	78,89	241	13:13:19	70,18
022	08:16:54	72,98	077	09:11:54	73,96	132	10:06:54	73,55	187	11:01:54	72,74	242	13:14:19	82,64
023	08:17:54	70,98	078	09:12:54	66,31	133	10:07:54	67,82	188	11:02:54	78,84	243	13:15:19	71,05
024	08:18:54	67,85	079	09:13:54	71,48	134	10:08:54	67,99	189	11:03:54	71,71	244	13:16:19	64,41
025	08:19:54	81,27	080	09:14:54	67,68	135	10:09:54	78,28	190	11:04:54	69,51	245	13:17:19	67,30
026	08:20:54	71,69	081	09:15:54	69,57	136	10:10:54	70,68	191	11:05:54	66,36	246	13:18:19	74,14
027	08:21:54	72,30	082	09:16:54	70,65	137	10:11:54	72,45	192	11:06:54	61,81	247	13:19:19	75,08
028	08:22:54	75,09	083	09:17:54	68,40	138	10:12:54	70,97	193	11:07:54	74,69	248	13:20:19	67,73
029	08:23:54	68,44	084	09:18:54	75,52	139	10:13:54	70,40	194	11:08:54	104,72	249	13:21:19	78,22
030	08:24:54	69,67	085	09:19:54	69,87	140	10:14:54	55,42	195	11:09:54	69,27	250	13:22:19	76,77
031	08:25:54	72,62	086	09:20:54	67,79	141	10:15:54	72,45	196	11:10:54	53,24	251	13:23:19	87,40
032	08:26:54	75,07	087	09:21:54	69,64	142	10:16:54	49,78	197	11:11:54	58,32	252	13:24:19	84,66
033	08:27:54	70,37	088	09:22:54	69,69	143	10:17:54	62,60	198	11:12:54	52,99	253	13:25:19	80,05
034	08:28:54	78,59	089	09:23:54	65,87	144	10:18:54	68,79	199	11:13:54	64,10	254	13:26:19	70,69
035	08:29:54	78,94	090	09:24:54	68,92	145	10:19:54	72,87	200	11:14:54	67,86	255	13:27:19	71,60
036	08:30:54	61,20	091	09:25:54	67,01	146	10:20:54	67,26	201	11:15:54	68,22	256	13:28:19	57,86
037	08:31:54	67,44	092	09:26:54	71,80	147	10:21:54	66,89	202	11:16:54	68,86	257	13:29:19	64,72
038	08:32:54	64,79	093	09:27:54	70,59	148	10:22:54	52,73	203	11:17:54	63,34	258	13:30:19	81,32
039	08:33:54	59,33	094	09:28:54	67,98	149	10:23:54	64,90	204	11:18:54	66,65	259	13:31:19	80,17
040	08:34:54	68,84	095	09:29:54	68,43	150	10:24:54	76,34	205	11:19:54	62,26	260	13:32:19	81,28
041	08:35:54	75,13	096	09:30:54	66,33	151	10:25:54	71,74	206	11:20:54	58,69	261	13:33:19	70,94
042	08:36:54	70,58	097	09:31:54	65,89	152	10:26:54	69,98	207	11:21:54	66,95	262	13:34:19	68,33
043	08:37:54	74,65	098	09:32:54	66,14	153	10:27:54	71,16	208	11:22:54	67,07	263	13:35:19	68,18
044	08:38:54	76,81	099	09:33:54	76,67	154	10:28:54	74,25	209	12:41:19	73,95	264	13:36:19	52,48
045	08:39:54	81,52	100	09:34:54	79,86	155	10:29:54	64,56	210	12:42:19	65,80	265	13:37:19	52,93
046	08:40:54	70,97	101	09:35:54	87,07	156	10:30:54	55,68	211	12:43:19	83,06	266	13:38:19	51,49
047	08:41:54	70,85	102	09:36:54	84,39	157	10:31:54	64,55	212	12:44:19	49,99	267	13:39:19	62,03
048	08:42:54	75,99	103	09:37:54	86,68	158	10:32:54	62,76	213	12:45:19	70,65	268	13:40:19	57,91
049	08:43:54	64,59	104	09:38:54	81,67	159	10:33:54	64,27	214	12:46:19	74,80	269	13:41:19	96,06
050	08:44:54	57,92	105	09:39:54	85,92	160	10:34:54	70,99	215	12:47:19	58,58	270	13:42:19	90,25
051	08:45:54	77,14	106	09:40:54	96,80	161	10:35:54	64,35	216	12:48:19	70,03	271	13:43:19	56,94
052	08:46:54	64,87	107	09:41:54	81,80	162	10:36:54	59,14	217	12:49:19	72,51	272	13:44:19	56,10
053	08:47:54	63,51	108	09:42:54	79,29	163	10:37:54	74,60	218	12:50:19	72,86	273	13:45:19	55,04
054	08:48:54	70,17	109	09:43:54	95,49	164	10:38:54	63,84	219	12:51:19	73,33	274	13:46:19	81,15
055	08:49:54	74,47	110	09:44:54	99,88	165	10:39:54	61,45	220	12:52:19	78,02	275	13:47:19	55,33

Ind	D/H	L [dB]	Ind	D/H	L [dB]	Ind	D/H	L [dB]	Ind	D/H	L [dB]	Ind	D/H	L [dB]
276	13:48:19	84,05	331	14:43:19	81,43	386	15:38:19	71,22						
277	13:49:19	60,49	332	14:44:19	79,17									
278	13:50:19	58,93	333	14:45:19	96,29									
279	13:51:19	69,57	334	14:46:19	78,86									
280	13:52:19	77,11	335	14:47:19	96,28									
281	13:53:19	71,91	336	14:48:19	82,37									
282	13:54:19	80,97	337	14:49:19	79,28									
283	13:55:19	61,89	338	14:50:19	78,68									
284	13:56:19	55,65	339	14:51:19	76,63									
285	13:57:19	73,60	340	14:52:19	78,95									
286	13:58:19	64,31	341	14:53:19	60,72									
287	13:59:19	64,87	342	14:54:19	62,14									
288	14:00:19	72,55	343	14:55:19	72,96									
289	14:01:19	69,47	344	14:56:19	81,51									
290	14:02:19	60,34	345	14:57:19	73,48									
291	14:03:19	72,63	346	14:58:19	80,19									
292	14:04:19	80,50	347	14:59:19	82,87									
293	14:05:19	62,04	348	15:00:19	87,33									
294	14:06:19	60,46	349	15:01:19	87,68									
295	14:07:19	80,00	350	15:02:19	80,53									
296	14:08:19	76,28	351	15:03:19	81,48									
297	14:09:19	76,84	352	15:04:19	83,32									
298	14:10:19	84,43	353	15:05:19	78,32									
299	14:11:19	67,53	354	15:06:19	80,33									
300	14:12:19	67,02	355	15:07:19	73,11									
301	14:13:19	62,54	356	15:08:19	73,53									
302	14:14:19	76,66	357	15:09:19	81,53									
303	14:15:19	76,51	358	15:10:19	79,90									
304	14:16:19	73,40	359	15:11:19	81,58									
305	14:17:19	77,46	360	15:12:19	72,76									
306	14:18:19	76,58	361	15:13:19	70,49									
307	14:19:19	78,65	362	15:14:19	76,19									
308	14:20:19	78,28	363	15:15:19	78,32									
309	14:21:19	79,53	364	15:16:19	83,38									
310	14:22:19	77,72	365	15:17:19	88,58									
311	14:23:19	65,63	366	15:18:19	81,39									
312	14:24:19	65,03	367	15:19:19	71,08									
313	14:25:19	76,21	368	15:20:19	71,19									
314	14:26:19	76,58	369	15:21:19	82,85									
315	14:27:19	78,68	370	15:22:19	86,25									
316	14:28:19	72,56	371	15:23:19	85,90									
317	14:29:19	78,75	372	15:24:19	85,85									
318	14:30:19	72,91	373	15:25:19	83,31									
319	14:31:19	77,97	374	15:26:19	67,82									
320	14:32:19	64,13	375	15:27:19	68,28									
321	14:33:19	85,23	376	15:28:19	61,18									
322	14:34:19	68,73	377	15:29:19	60,16									
323	14:35:19	84,89	378	15:30:19	58,43									
324	14:36:19	80,10	379	15:31:19	59,11									
325	14:37:19	74,07	380	15:32:19	78,93									
326	14:38:19	73,28	381	15:33:19	84,64									
327	14:39:19	75,25	382	15:34:19	84,47									
328	14:40:19	69,74	383	15:35:19	84,84									
329	14:41:19	79,49	384	15:36:19	73,50									
330	14:42:19	72,14	385	15:37:19	69,40									